

# RunABOUTs

Combining **STRENGTH, STYLE and PRACTICALITY** in one  
"Xtremely" affordable package

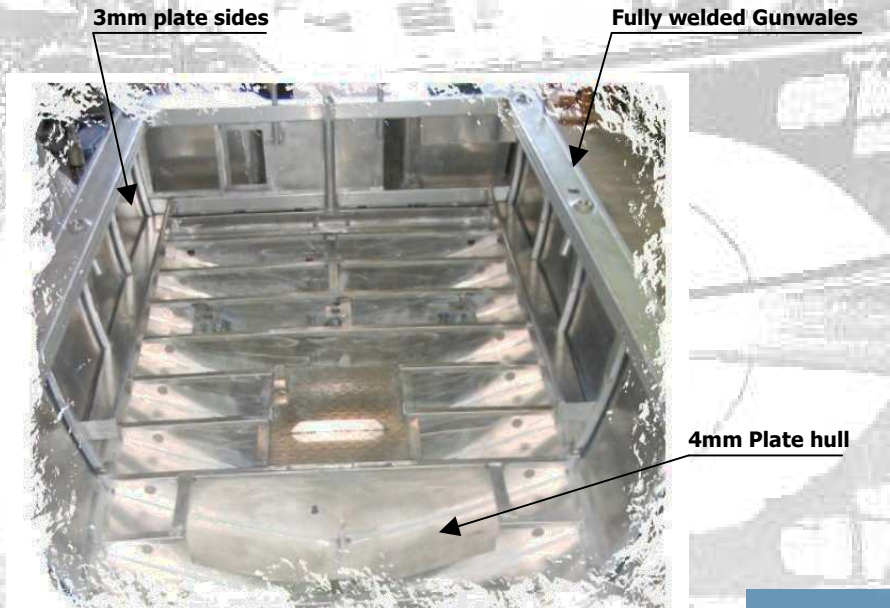


**XM550R – Stylish and practical yet still built TOUGH!**

- ✓ Plate aluminium construction
- ✓ Fully welded gunwales
- ✓ Fully welded 100mm Keelson
- ✓ Welded Alloy Rod holders
- ✓ Bow and Stern rails
- ✓ Spacious side pockets
- ✓ Enormous internal Free Board
- ✓ Large anchor well
- ✓ 4mm Plate deck – no timber!
- ✓ Dual transducer mounts
- ✓ S/S sheathed Winch cleat
- ✓ Quality Two Pack paintwork
- ✓ Excellent sea keeping abilities
- ✓ Comfortable, dry ride
- ✓ Excellent stability
- ✓ Quality fittings
- ✓ Teflon engine mounting board
- ✓ Easy access SportzBak Transom



**XM500R – Walk-thru screen, front storage locker and 4mm plate decks.**



**XM500R – SportzBak Transom**

**Built to last a lifetime**

- ✓ Marine grade 5083 4mm hull – 4.5m to 6.0m
- ✓ Marine grade 5083 3mm plate sides.

**\*5 Year Warranty\***



**XM550R**

# RunABOUTs

## standard features and options



*Stylish, practical design*



*Cast Alloy rodholders are standard fitment. (Not plastic)*

Specifications	450R	480R	500R	550R	600R
Length – Overall (m)	4.65	4.95	5.15	5.65	6.15
Length – Bow to transom (m)	4.8	4.8	5.0	5.5	6.0
Beam (m)	2.1	2.2	2.2	2.3	2.4
Depth (m)	1.1	1.2	1.2	1.3	1.4
Hull thickness (mm)	4	4	4	4	4
Topside thickness (mm)	3	3	3	3	3
Transom shaft length	20"	20"	20"	20"	25"
Approximate weight (Boat only)	430	460	485	540	620
Recommended Horsepower	50	70	90	115	140
Horsepower rating (Maximum)	80	90	115	140	200
Maximum transom weight (kg)	175	200	200	230	270
Number of people	4	4	5	6	6

### Standard features:

Under floor fuel tank	✓	✓	✓	✓	✓
Front anchor well.	✓	✓	✓	✓	✓
Side pockets.	✓	✓	✓	✓	✓
Seat positions	4	4	4	4	4
Seats (Padded fold down style)	2	2	2	4	4
Glove compartment	✓	✓	✓	✓	✓
Non-feedback steering.	✓	✓	✓	✓	✓
Sports steering wheel.	✓	✓	✓	✓	✓
Bilge pump.	✓	✓	✓	✓	✓
Auto float switch (Bilge)	✓	✓	✓	✓	✓
Navigation and anchor lights.	✓	✓	✓	✓	✓
Carpeted decks	✓	✓	✓	✓	✓
Welded alloy rod holders.	✓	✓	✓	✓	✓
Positive buoyancy	✓	✓	✓	✓	✓
Two pack Paintwork. (2 tone)	✓	✓	✓	✓	✓
Graphics.	✓	✓	✓	✓	✓
Wiring harness	✓	✓	✓	✓	✓
Switch panel	✓	✓	✓	✓	✓
SportzBak transom with ladder.	✓	✓	✓	✓	✓
Anchor Bollard	✓	✓	✓	✓	✓
Rear bollards x 2	✓	✓	✓	✓	✓
Bow sprit	✓	✓	✓	✓	✓
S/S sheathed winch cleat.	✓	✓	✓	✓	✓
Battery, isolator switch & box	✓	✓	✓	✓	✓
Bow rails	✓	✓	✓	✓	✓
Stern rails	✓	✓	✓	✓	✓

### Options:

Rear lounge – fold down.	OPT	OPT	OPT	OPT	OPT
Live bait tank	OPT	OPT	OPT	OPT	OPT
Kill Tank (lift out style)	OPT	OPT	OPT	OPT	OPT
Horizontal Rod holders	OPT	OPT	OPT	OPT	OPT
Bait / filleting board	OPT	OPT	OPT	OPT	OPT
Rocket launcher canopy	OPT	OPT	OPT	OPT	OPT



*XM550R is an 'Xtremely' roomy boat!*



**XM500R**



**XM550R**



**XM550R**

**\*5 Year Hull Warranty\***

Designed and Built by  
**GS MARINE**

30 Toupein Road, Palmerston, NT, 0830.  
 PO Box 1066, Howard Springs, NT, 0835  
 Email: [info@gsmarine.com.au](mailto:info@gsmarine.com.au). Web: [www.gsmarine.com.au](http://www.gsmarine.com.au).

Your Authorised Dealer is: